

Non-profit state organization with special tasks



Turn over in 2022

64,4 M€



LUMI

By EuroHCP JU and unique consortium of 10 countries – Belgium, Czech Republic, Denmark, Estonia, Finland, Iceland, Norway, Poland, Sweden and Switzerland.



Headquarters in Espoo, datacenter in Kajaani



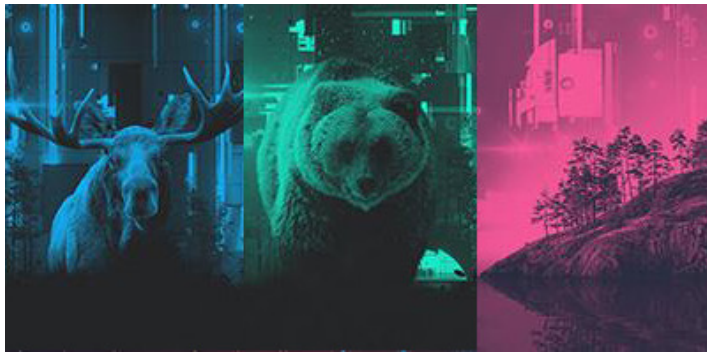
Owned by the Finnish state **(70%)** and all Finnish higher education institutions **(30%)**



Circa
586
employees
(01.2023)

CSC – Finnish powerhouse for scientific computing

CSC has provided computational services over 50 years (since 1971)



Mahti, Puhti and Allas (national infrastructure)

Workhorse for catering all demands for scientific computing in Finland: large-scale simulations, data-intensive computing, sensitive data, data streams

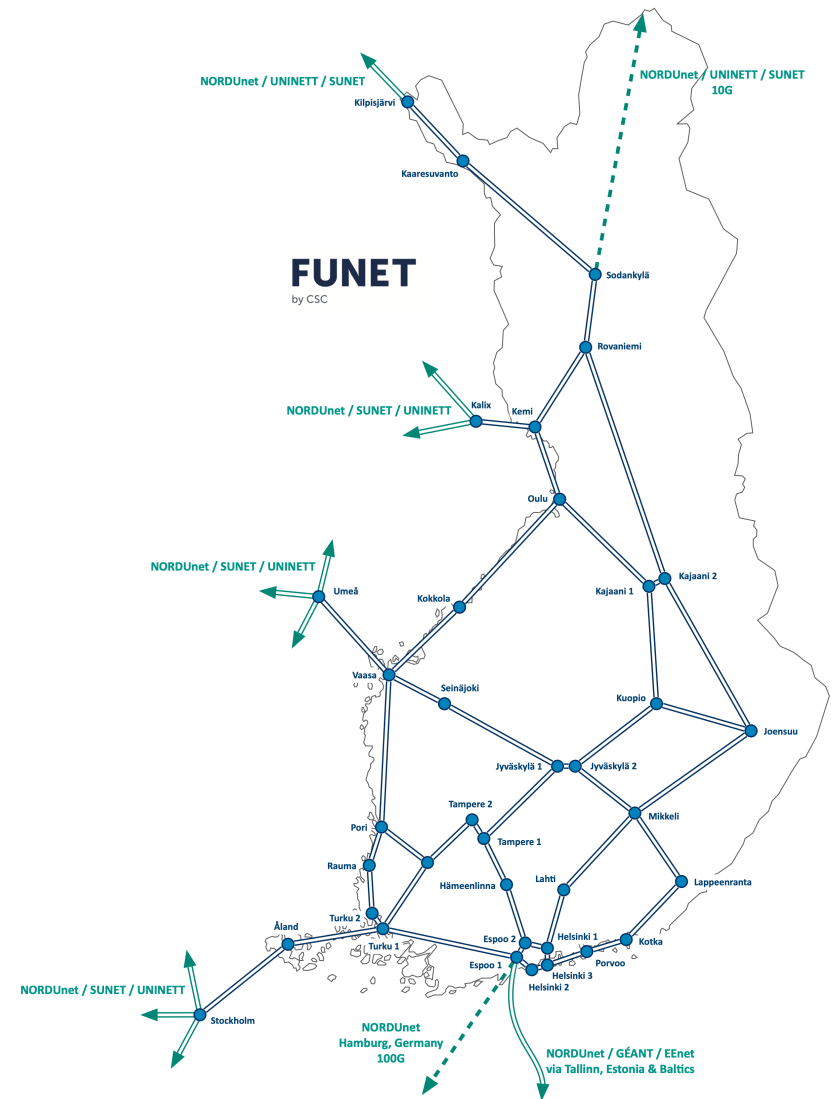


LUMI (EuroHPC)

- Grand Challenges
- Strategic research
- Collaboration of HEIs, research institutions and companies
- International collaboration
- Support for large research infrastructures

Funet (Finnish University and Research Network) is a high-speed data communications network serving the Finnish research community

- Funet turns 40 years old and the internet access in Finland is 35 years old
- Funet connects about 80 research organizations and about 370 000 users.
- The reliable high-speed data communications networks of Kajaani data center are designed specifically for HPC
- LUMI research infrastructure is a **direct part of the Nordic backbone**
- The next-generation NORDUnet connects the Kajaani LUMI site to GÉANT, ensuring European-wide availability of any HPC resources installed in Kajaani



A vibrant data center ecosystem in Kajaani



World-class environmental sustainability and cost-efficiency

LUMI

Up to 200 MW

100%

renewable energy
produced with
hydropower

Negative

**CO₂
footprint**

-12400 T Co₂eq

Waste heat covers

20%

of the yearly
district heating needs
of Kajaani

Videos

- KDC: <https://www.youtube.com/watch?v=GUCVB0Z4B0s>
- LUMI: <https://www.youtube.com/watch?v=vMliW5mtnOs>