



Trust Fabric

Sprint demo

Niels van Dijk
Diana Gudu
Gabriel Zachmann
Roland Hedberg
Mihály Héder

Sprint Demo, 23 January 2024

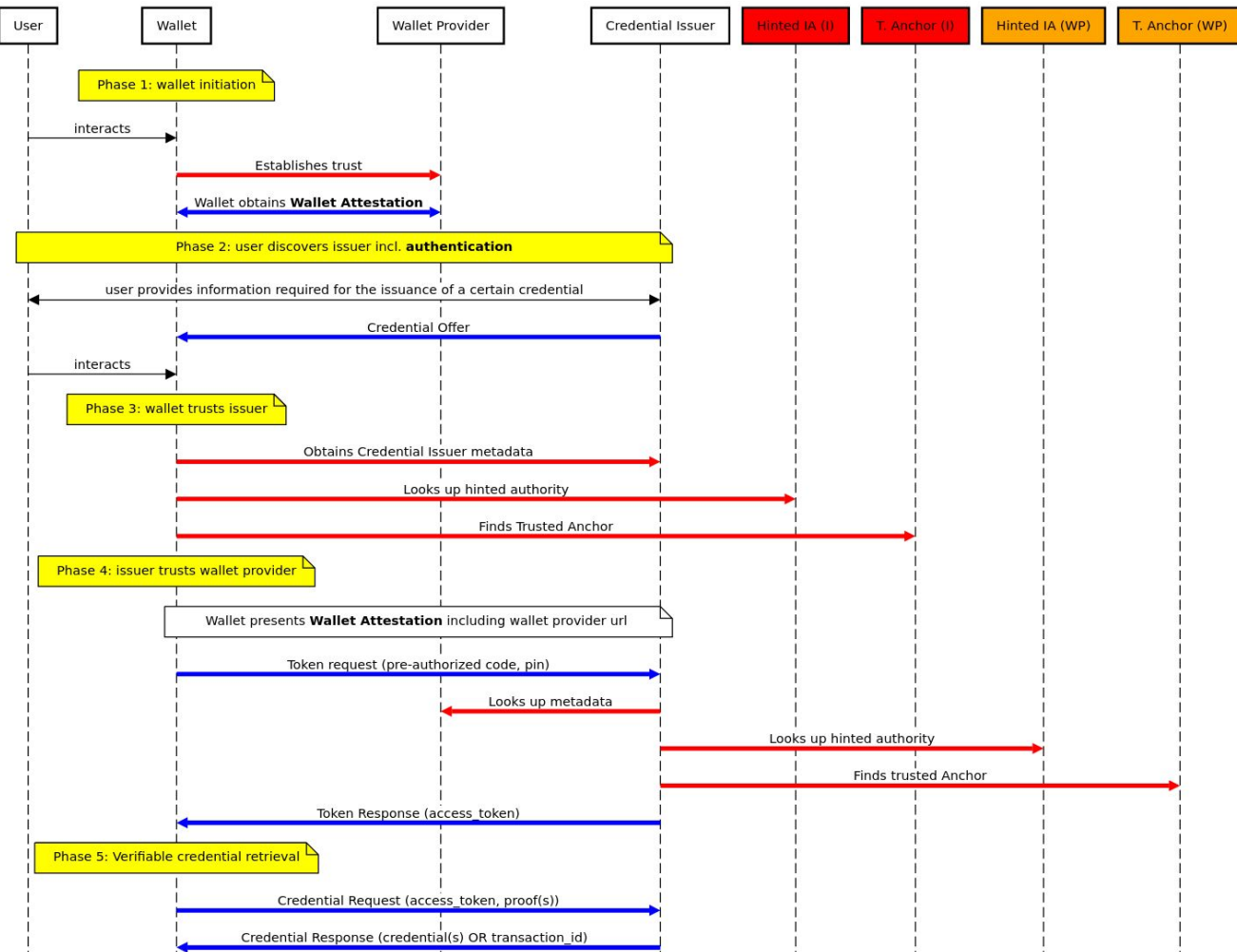
Public (PU)

Why?

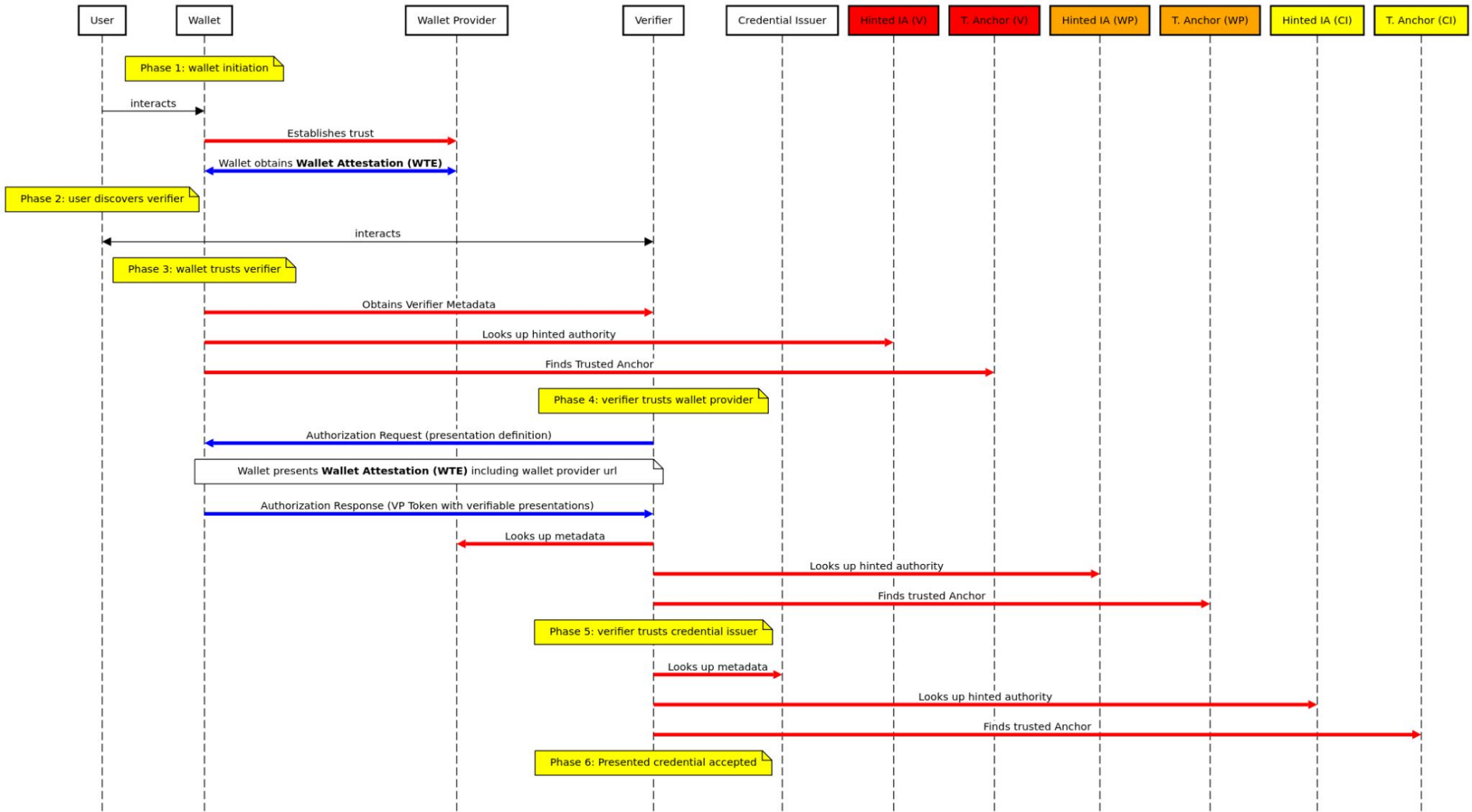
- Europe is working towards a wallet-based identity ecosystem.
- Two protocols are in the core of the specification: ISO 18013-5:2021 (mDL) and OpenID4VC + Verifiable Credentials.
- The current version of the ARF has declared the organizational trust out of scope. However, for a real world ecosystem, it is clear an interoperable trust fabric will be needed.
- The OpenID Federation specification seems to have many characteristics that would allow such a wallet ecosystem to be defined.

This activity will investigate and test the use of the OpenID Federation protocol as a trust fabric for a wallet ecosystem





OID4VP Flow with Trust chains



Challenges

- Wallet instance attestation
- Re-using existing trustframework



Wallet instance attestation

- > How to know the Wallet asking for credentials is fit for purpose?
- The wallet provider validates the wallet(software) and possibly OS is correct
 - But we do not want to depend on big tech to do it for us each and every time
 - We may have additional rules, depending on Wallet capabilities
 - We do not want to create wallet 'islands'

Which components of OpenID Federation are used to express what?

Existing trust framework

- eduGAIN policy
- First attempt (WIP) to map and discuss REFEDs specifications:
<https://edu.nl/wye4g>



GN5-1 WP5
☆

- 📄 Pages
- 📝 Blog
- 📅 Calendars
- 📊 Analytics
- SPACE SHORTCUTS
- 📅 Meeting notes (2)
- PAGE TREE
- GN5 Trust Identity
- Meeting notes (2)
- › T0 - Work Package Coord
- › T1 - eduroam
- T2 - eduGAIN
- T3 - AAI core platform an
- T4 - InAcademia
- ✓ T5 - Trust and Identity In
- Call for Ideas
- ✓ Incubator Activities
 - › Activity Cycle 1
 - ✓ Activity Cycle 2
 - › Automation of depl
 - › Scalable testing for i
 - ✓ Trust fabric for walle
 - Leveraging REFEE
 - Webwallet for resear

Pages / ... / Trust fabric for wallets 🔍 📊 Analytics

Leveraging REFEDs specifications in OpenID Federation federation and C

Created by Niels van Dijk, last modified on Jan 15, 2024

- Introduction
- REFEDs specifications
- Specification types
 - OpenID Federation implementation of specification types
 - Wallets
- Overview of findings
- Detailed discussion
 - Research and Scholarship (R&S) v1.3

Introduction

The research and education sector has over the past decades developed a global identity federation ecosystem which has simplified access federations connecting more than 8,000 Identity and Service Providers. On a national level even more services and institutions are connecting technical, as well as policy and trust interoperability has been accomplished, through the joined implementation of various specifications. The identity community with strong bonds and decades of experience in deploying and operating identity federation at scale.

REFEDs, the Research and Education FEDerations group, has been instrumental in providing an open meeting place for articulating the multiple topics based on the interests and requirements of its participants. This includes mostly policy, but also some technical and outreach topics emerging federations.

While REFEDs as such has no bias towards a specific technical implementation, the fact that the SAML 2.0 specification is currently the default ranges for protocol specific sections, to assumption on how a specification would be implemented operationally. The rise of protocols like the specifications. Not only should it be investigated in what way the specifications may be implemented in these protocols, in addition we may also need to take into account how to go between protocols as it may be required to translate between not just technical credentials.

This document provides a first assessment on how the [current REFEDs specifications](#) (Nov 2023) may be leveraged in an [OpenID Federation](#). For the latter it should be noted that as this ecosystem and its standards are still being developed, the statements and assumptions on how

REFEDs specifications



Demo

www.geant.org



Co-funded by
the European Union



Thank you! Questions?

www.geant.org



Co-funded by
the European Union